



Company **Profile**

# Building **EXCELLENCE**

In the real estate and  
construction industry



# INTRO- duction

Building excellence is a holistic approach to the construction industry that focuses on achieving the highest standards of quality, innovation, and sustainability in every project. It's not just about the finished product, but about the entire process, from the initial design to the final handover and beyond.



# Understanding Company Values and Culture

Understanding company values and culture is essential for creating a thriving organizational environment. By clearly defining and communicating values, fostering a positive culture, and continuously assessing their impact, organizations can enhance employee engagement, drive performance, and build a strong reputation. In today's competitive landscape, a strong alignment between values and culture not only differentiates a company but also contributes significantly to its long-term success.

# About the company

EFATA INTERPROJECT LTD is a leading real estate development and investment company based in Nigeria. With over a decade of experience, we specialized in residential, commercial, and mixed-use properties, committed to delivery quality, sustainable, and innovative real estate solutions. Our mission is to create value for our clients, stakeholders, and communities through excellence in design, construction and property management.







# The company's vision

To be the most trusted and innovative real estate company in Nigeria transforming the landscape of urban living and contributing to the development of sustainable communities.

# The company's Mission

To provide high -quality real estate services and develop exceptional properties that enhance the quality of life for our clients and contribute positively to the environment and community.



# The company's Values



## **Integrity:**

We uphold the highest standards of honesty and transparency in all our dealings.

## **Excellence:**

We strive for excellence in every project, ensuring quality and attention to detail.

## **Innovation:**

We embrace innovation and creativity to deliver cutting edge solutions.

## **Sustainability:**

We are committed to sustainable practices that protect the environment and promote community well-being

## **Customer-centricity:**

We prioritize our client's needs and work tirelessly to exceed their expectations.



# KEY SKILLS DEVELOPMENT

Key skills development is a critical investment for both individuals and organizations. By emphasizing the importance of adapting to change, enhancing performance, and supporting career advancement, organizations can create a workforce that is skilled, adaptable, and poised for success. Through various strategies such as training, mentorship, and continuous feedback, companies can foster a culture of development that not only benefits employees but also drives organizational growth and competitiveness in the marketplace





# EFFECTIVE COMMUNICATION AND TEAMWORK

Mastering communication and teamwork is critical for organizations aiming to achieve their objectives and foster a positive workplace culture. By focusing on the importance of effective communication, key components of teamwork, and implementing targeted strategies, organizations can enhance collaboration, improve efficiency, and build strong relationships among team members. Continuous efforts in developing these skills will ultimately lead to a more engaged, productive, and successful workforce.





# Problem Solving AND INNOVATION

Problem solving and innovation is critical for organizations seeking to thrive in an ever-evolving business landscape. By emphasizing the importance of these skills, understanding their key components, and implementing targeted strategies, organizations can enhance their ability to address challenges and seize opportunities. Fostering a culture that encourages creative thinking, collaboration, and continuous improvement will ultimately lead to sustained success and growth.

## **Problem-Solving Process:**

- Identify the Problem
- Analyze Options
- Implement Solutions
- Evaluate Outcomes



# Leadership AND MANAGEMENT SKILLS

Leadership and management skills are essential for individuals aspiring to excel in their careers and for organizations aiming for sustainable success. By emphasizing the importance of these skills, understanding their key components, and implementing targeted strategies for development, organizations can cultivate effective leaders and managers. Fostering a culture of continuous learning and growth will ultimately lead to a more engaged, productive, and successful workforce.





Our Projects

# PROJECT COMPLETED AND UNDERGOING

With a strong portfolio of successful projects and a dedicated team of projects we look forward to shaping the future of real estate in Nigeria







## Construction of REMACO Shopping Mall and Residence @ CRD Lugbe





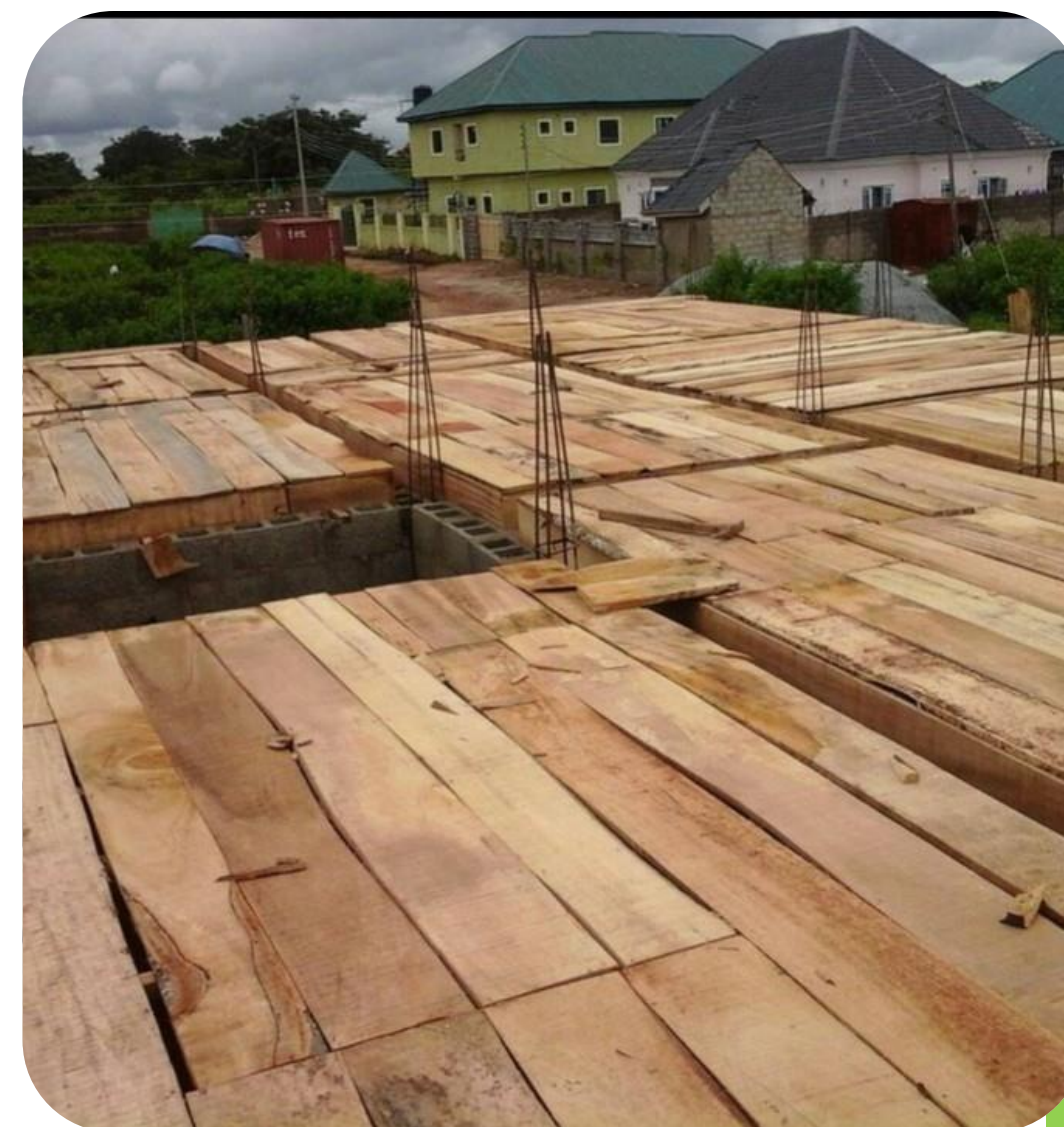
## Construction of **Tenache Homes** @Sabon Lugbe West





## Construction of Six Units of 2 Bedroom Apartment

@SAUKA New site Lugbe





## Construction of Road at KYC HOMES PHASE 2

Supervised by Engr. Michael and His Team





## Construction at **Royal Estate** FCT Abuja.



# Efata Classic **Villa Estate** @ Sabon Lugbe FCT Abuja.





**4-Bedroom Detached  
Duplex**  
400sqm





**5-Bedroom fully  
Detached Duplex +BQ  
500sqm**





**5-Bedroom Semi  
Detached Duplex**  
600sqm





**5-Bedroom  
terrace Duplex**  
1200sqm

# CONCLUSION

EFATA INTERPROJECT LTD is poised to continue its growth trajectory in the Nigeria real estate market, driven by a commitment to quality, innovation, and customer satisfaction. With a strong portfolio of successful projects and a dedicated team of projects we look forward to shaping the future of real estate in Nigeria.



# Contact us

-  [ceo@efatainterproject.ng](mailto:ceo@efatainterproject.ng)
-  Suite 61, Atlantic Mall Plot 482  
Obafemi Awolowo Express way Utako Abuja
-  07063994900, 08154251376
-  [www.efatainterproject.ng](http://www.efatainterproject.ng)